

Engaging Curriculum Solutions

ECS

*Engaging
Curriculum
Solutions*

Professional Development Events



www.engagingcurriculumsolutions.com.au

About Kate



Engaging Curriculum Solutions is Kate's baby. After over 25 years working in services and engaging in research, Kate wanted to share her knowledge with others and ECS was born. She believes passionately in the importance of advocacy and this is her way of giving back to the sector, children and families. Kate presents all of the ECS professional development events and she loves bringing her experience in to training,

Throughout her years in the sector, Kate has come to be known for her passion and her commitment to quality learning practices and environments, her greatest passion is for trauma informed education. She has developed a great knowledge of the Assessment and Rating process through participating in service ratings as an educator, regional manager, quality consultant and as an NS/EL directing a service through the A&R process receiving exceeding in all the quality areas and standards. In terms of philosophy, anyone who has spoken to Kate or heard her speak will know, it all comes down to one thing for her - best outcomes for children.

Kate has been a great advocate for the sector, using her knowledge and experience to help inform the community. Through meetings with politicians, writing for unions and speaking at sector events such as the PCI hearings, Kate has given a voice to educators in Australia. Kate has also written for Early Childhood Australia's The Spoke, Tapestry Online Learning Journals and regularly contributes to the ECS blog.



About Engaging Curriculum Solutions

Engaging Curriculum Solutions understands the early childhood sector is constantly changing and evolving as we build our understanding of child development. We understand the importance of staying up to date on current events and trends in the sector. We endeavour to assist services in doing just that through our early childhood professional development opportunities and consultancy services. Further to this, we are driven by the National Quality Standards and Early Years Learning Framework, ensuring our business not only supports best outcomes for children, but the assessment and rating process.

At ECS we have a strong image of the child as being an active participant in the construction of their own learning and this is what we hope to impart on others. Our philosophy is underpinned by our understanding of child development (particularly brain development and what we have learnt from children impacted by trauma) and early childhood theory. In particular, the Reggio Emilia approach has had a huge impact on ECS practice and is the primary influence throughout our services. Engaging Curriculum Solutions believes in the importance of scaffolding children's understanding of sustainable living practices and encouraging their connection with the wonders of nature. We believe best practice should be embedded in to routine, culture, curriculum, relationships and leadership and we hope to help services achieve this.

As a consultancy and professional development service we recognise every early childhood service is unique and we aim to properly understand your service needs. We realise services are impacted by their local community, their leaders, educators, families and children; and all these stakeholders have to be taken in to account to achieve high quality early childhood education and care. ECS values the importance of individual service and educator philosophy. We take this in to account when designing professional development and consultancy packages.

Our early childhood professional development sessions seek to engage and inspire educators to find their own pedagogical beliefs and systems. We do not believe in giving the answers, but in finding the answers together. As early childhood specialists we highly regard the process of collaboration and scaffolding.



@EngagingCurriculumSolutions



@engagingcurriculumsolutions

Feedback From The Field

"Wow! What a session. What a presenter. Thank you so much for explaining those with exposure to trauma and the strategies!" - Anon, Educator

"Kate is such an information facilitator, I really enjoyed my training from her in Trauma." - Ellen, Educator

"I love [the theory] training. And the way it was presented... very engaging, I would definitely recommend for everyone." - Anna, Educator

"Kate is an amazing, insightful and dedicated professional with a wealth of knowledge. Her passion for Early Childhood Education combined with her extensive experience in the sector makes her a huge asset to the industry. Kate's sessions provoke powerful, passionate discussions to improve the way we interact, engage and educate.... I could honestly listen to Kate for hours!" Michelle, Director

"Absolutely amazing. Well thought out presentations. Kate is very passionate and will take the time to ensure you fully understand the topic." - Mariah, Educator

"I have attended 2 of Kate's trainings now and she is by far the most amazing, engaging presenter I've ever had. So much passion, enthusiasm and knowledge to gain from her courses". Christina, EL

"It doesn't matter how long I spend with Kate - whether it is 5 minutes or the whole day, she is always able to make me think deeply about my interactions with children, educators and families.... I cannot recommend Kate more to anyone who wants to challenge their thinking and ideas about early childhood and you will be amazed at what you come away with." Emily, Director

"Kate is one of the most knowledgeable, inspiring, and passionate people I have ever met! The professional developments I have attended with Kate have ignited great passion within me, and remind me to reflect and strive for best practice." - Micayla, Educator

Inspiring Play Spaces and Materials



Central Coast Details

Venue: Alkira ELC
1 Reads Rd,
Wamberal, NSW, 2260
Date: Thursday 6th
February, 2025
Time: 9am-3pm

Get your early childhood service and room ready for 2025! In this professional development day we discuss ways in which to create a fluid and engaging environment which is rich with natural opportunities for learning. We will look at what makes an environment's atmosphere conducive to learning and exploration.

We will explore the possibilities of open ended materials and provocations, as well as the endless options for reusing and reinventing every day items in the service environment. We discuss the way in which light and shade can be used to inspire creativity and transform landscapes.

Additionally we will look at principles applied to environments from different approaches including Montessori, Steiner, and Reggio Emilia. Resource kit and lunch included. See schedule for break down of the day.

Engaging Curriculum Solutions

ECS

Flexible Schedule

Part 1 (9am-10.40 am)

- Welcome
- Introduction
- Links to the NQS and EYLF
- Effective engagement of children

Morning Tea 10.40am - 10.55am

Part 2 (10.55 - 12.45 pm)

- Creating an atmosphere for learning
- Theories of environments
- Using light and shade to transform landscapes

Lunch 12.45pm - 1.15pm

Part 3 (1.15pm - 3 pm)

- Effective material selection
- Reusing and reinventing
- Outdoor Environments

Child Protection Refresher

Central Coast Details

Venue: Alkira ELC

1 Reads Rd, Wamberal, NSW, 2260

Date: Thursday 6th March, 2025

Time: 10am-12pm

Need to refresh your knowledge of child protection? The NSW Government recommends you do so every 12-24 months. In this session we will review your obligations as a mandatory reporter and the laws, regulations and guidelines informing this. We will explore the different categories of abuse and how to recognise the indicators, including how to respond to disclosure. We will then explore the reporting process and the reportable conduct scheme. Finally we look at the child safety standards and what these look like in practice to ensure your service is working towards best outcomes for children's safety and well being.



Working With Challenging Behaviours

Central Coast Details

Venue: Alkira ELC

1 Reads Rd, Wamberal, NSW, 2260

Date: Thursday 3rd April, 2025

Time: 10am-12pm

Over the last 5 years we have seen and increase in children's dysregulation and challenging behaviours. As educators we have a responsibility to support children to express emotions effectively, and in this session we will explore this in detail. We will be looking at contributing factors to this rise in dysregulation and what is happening in the brain when this occurs. We will then discuss both 'in the moment' and long term strategies that educators can employ to help support children, families and each other when big emotions and behaviours occur.



Trauma Informed Education



Central Coast Details

Venue: Alkira ELC
1 Reads Rd,
Wamberal, NSW, 2260

Date: Thursday, 8th
May, 2025

Time: 9am-3pm

In 2015, 45000 children were found to be at risk of harm, in Australia. As educators we are an important source of safety and comfort for children who come from traumatic home environments. As awareness grows, the educational world's interest in trauma informed practice also increases.

There are two types of trauma: simple and complex. In this full day session we will discuss brain development and the impact of (primarily complex) trauma on the developing brain. We will look at how trauma impacts behaviours, memory and relationships. Further to this we will explore trauma informed care, including mindful education.

Join Kate, a childhood trauma survivor herself, for a true insight in to the impact of complex trauma; and learn how you can be a healing hero for the children affected. Resource kit and lunch included. See schedule for break down of day.

Engaging Curriculum Solutions
ECS Schedule

Part 1 (9am-11.10am)

- Welcome
- Introduction
- Areas of the brain and their functions.
- Building neural connections
- Impact of trauma

Morning Tea 11.10-11.25

Part 2 (11.25am - 12.45 pm)

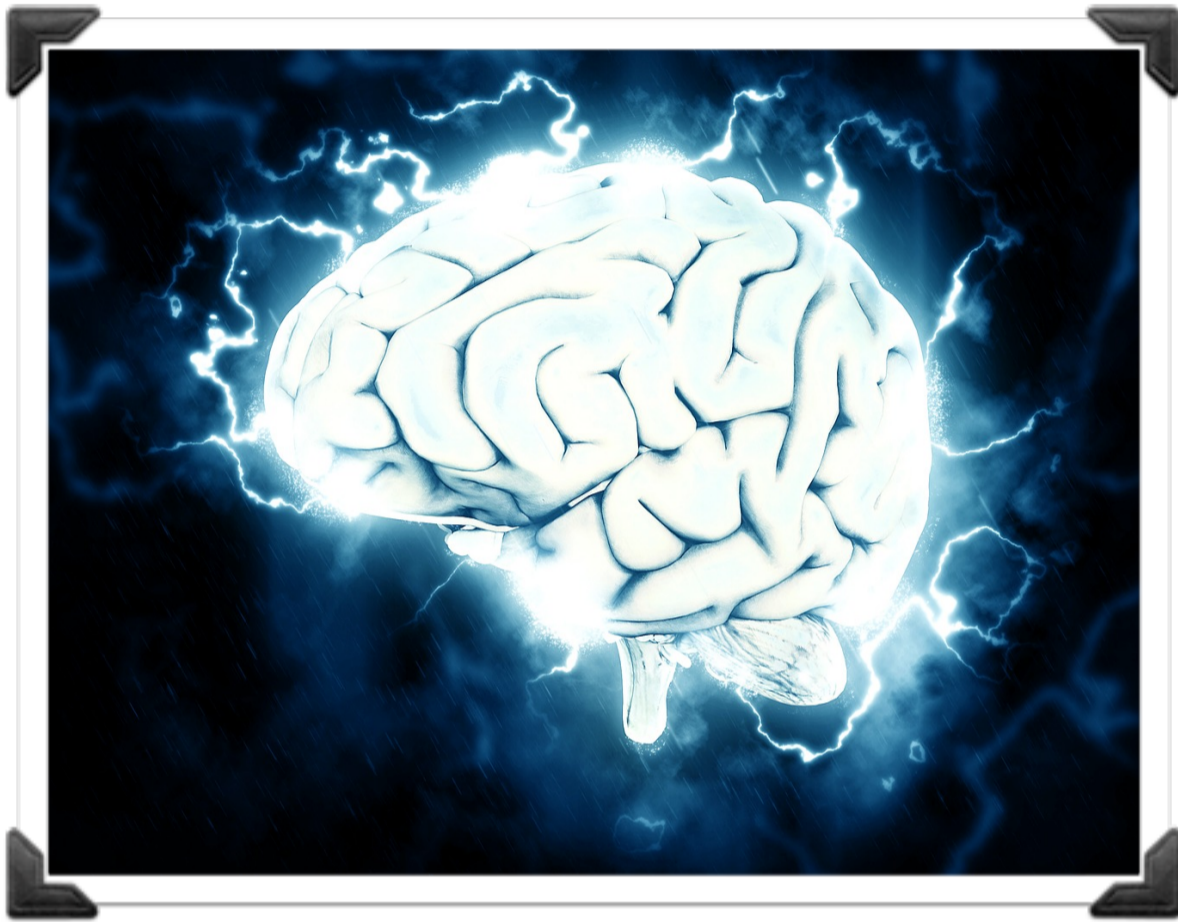
- Trauma informed practice
- Questions

Lunch 12.45pm-1.15pm

Part 3 (1.15pm - 3 pm)

- Protective Behaviours
- Mindful in Education
- Questions

What's Going on In There? Brain Development in the Early Years

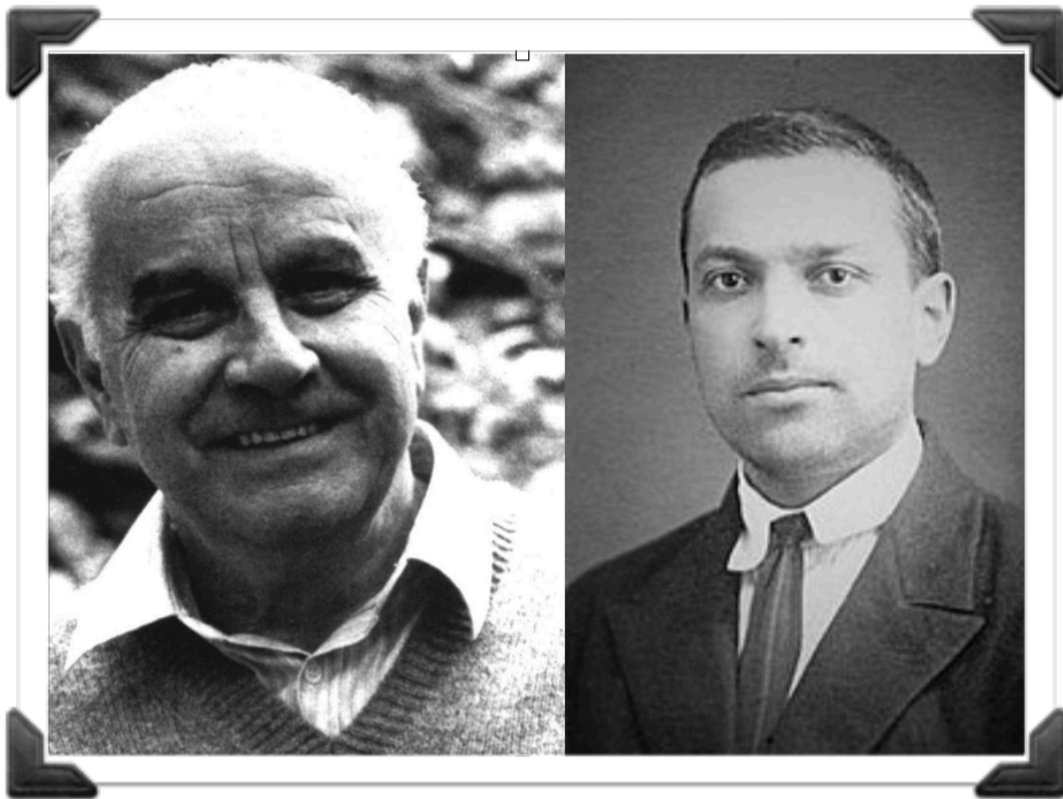


Central Coast Details

Venue: Alkira ELC
1 Reads Rd,
Wamberal, NSW, 2260
Date: Thursday, 19th
June, 2025
Time: 10am-12pm

Having a sound knowledge of how children's brains develop and learning occurs can change our approach to practice profoundly. It leads to effective learning environments that foster focus, and experiences for children which are rich, sustained and complex. Autonomy skills and self regulation can be promoted effectively and children tend to prove to be capable beyond expectations. In this session Kate will make neuroscience fun and easy to understand. We will explore the important regions of the brain and neurotransmitters for effective learning (particularly around emotional regulation, memory building and language acquisition) and how children build strong neural pathways and executive function. We will end with a fun exploration of some of the neuromyths that circulate in early childhood and wider society. This training can help evolve your approach to environments, relationships and implementation of experiences!

Theories that Inform Practice: Exploring Theory in ECE



Central Coast Details

Venue: Alkira ELC
1 Reads Rd,
Wamberal, NSW, 2260

Date: Thursday 24th
July 2025

Time: 9am-4pm

This is one of our most popular sessions and always manages to stop any thoughts that theory might be boring or outdated! As Kate explores each of the theories she will explain how they are supported by current research (particularly brain development).

The NQS expects all educators to have an understanding of the theory that underpins our national curriculum (EYLF). This is why we have chosen the theorists we have for this exploration, and we will make these links clear as we move through each theorist.

In this full day session we will explore a range of theory and approaches including (but not limited to) Piaget, Vygotsky, Bruner, Gardner, Montessori, and the Reggio Emilia approach. Resource kit and lunch included. See schedule for break down of the day and all theories explored.

Engaging Curriculum Solutions



Flexible Schedule

Part 1 (9am-11.30 am)

- Welcome
- Introduction
- Piaget
- Popular Theories (Vygotsky, Maslow, Parten and Bronfenbrenner)
- Psychodynamic theories (Freud and Erikson)

Morning Tea 11.30am - 11.45am

Part 2 (11.45 - 1.30 pm)

- Learning Theories (Dewey, Bruner, Gardner)
- Attachment theory (Bowlby and Ainsworth)

Lunch 1.30pm - 2pm

Part 3 (2pm - 4 pm)

- Approaches in Early Childhood (Montessori, Steiner, Reggio)

Working With Children With Additional Needs



Central Coast Details


Venue: Alkira ELC
1 Reads Rd,
Wamberal, NSW, 2260
Date: Thursday, 4th
September 2025
Time: 9am-3pm

Working with children with additional needs can be challenging and requires understanding of the need in question. It can also be some of the most rewarding work we do with children in early childhood. It requires knowledge, intentional thinking, and compassion.

In this session we will discuss a range of additional needs including (but not limited to) Autism Spectrum Disorder, Attention Deficit Hyperactivity Disorder, Sensory Processing Disorder and Cerebral Palsy. We will explore the strategies we can employ to work with children and their families to ensure the best outcomes for the those affected.

We will discuss ways to identify additional needs, work with families towards assessment, the circle of security, education and family plans, strategic inclusion plans and the inclusion support program, as well as strategies for intervention. Resource kit and lunch included. See schedule for break down of the day.

Engaging Curriculum Solutions



Flexible Schedule

Part 1 (9am-11 am)

- Welcome
- Introduction
- Importance of Inclusion
- Introduction to common additional needs

Morning Tea 11am - 11.15am


Part 2 (11.15 - 12.35pm)

- Identifying Additional Needs
- Communicating Concerns with families
- Plans for inclusion

Lunch 12.35pm - 1.05pm

Part 3 (1.05pm - 3 pm)

- Utilising the inclusion support program
- Strategies for intervention
- Self Care



Creating a Culture of Critical Reflection



Central Coast Details

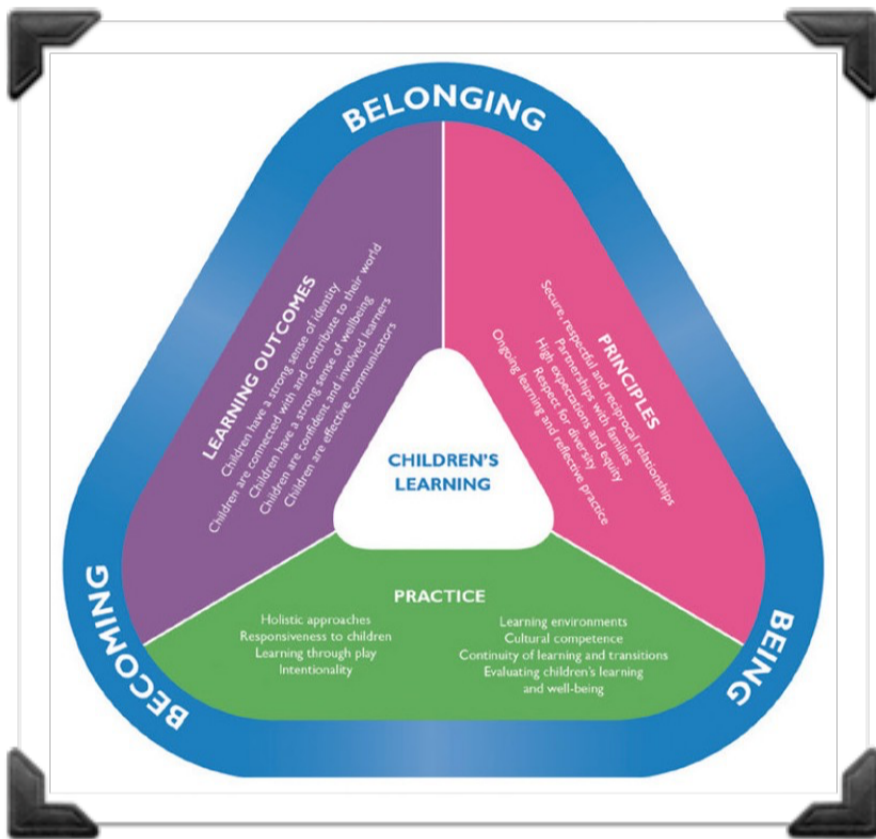
Venue: Alkira ELC
1 Reads Rd,
Wamberal, NSW, 2260

Date: Thursday, 25th
September 2025

Time: 9am-12pm

Critical reflection is a huge part of both the EYLF V2 and the National Quality Standards. But what is it really? This is a question we will be exploring in this workshop. We will look at the importance of critical reflection in educators professional growth and in effective documenting of children's learning. We will go over a variety of strategies for critical reflection both on the individual level and as a collaborative process with the team. Critical Reflection is a wonderful process by which we can improve practice across all platforms and build knowledge as well as team morale. It guides us in programming, quality improvement and professional development and encourages us all to become critical thinkers.

Unpacking the EYLF V2: Principles and Practices



Central Coast Details

Venue: Alkira ELC
1 Reads Rd,
Wamberal, NSW, 2260
Date: Thursday, 16th
October 2025
Time: 9am-4pm

A great workshop for educators of all qualifications and experience levels! The NQS expects all educators to have an understanding of the principles and practices of the Early Years Learning Framework. It's not just about outcomes anymore! And it never really was.

The EYLF explicitly states that the “principles underpin practice that is focused on all children making progress in relation to the Learning Outcomes” (p.14). This means that if teachers consistently employ the principles and practices of the national curriculum, they should naturally embed all five outcomes into their programs.

In this full day session we will unpack all the principles and practices of the EYLF in detail, the theory that informs them, how to embed them into your culture, and what they look like in documentation. Resource kit and lunch included. See schedule for break down of the day.

Engaging Curriculum Solutions
ECS

Flexible Schedule

Part 1 (9am-11am)

- Welcome
- Introduction
- Why principles and practices?
- Principles 1-3

Morning Tea 11-11.15

Part 2 (11.15am - 1pm)

- Principles 4-5
- Practices 1 -2

Lunch 1pm-1.30pm

Part 3 (1.30pm - 4 pm)

- Practices 3-8
- Questions

Supporting Children's Emotional Development: Self Regulation and Empowerment



Central Coast Details

Venue: Alkira ELC
1 Reads Rd,
Wamberal, NSW, 2260

Date: Thursday 20th
November 2025

Time: 9am-3pm

This is a course we highly recommend to all educators! Children's emotional development sets the foundations for all other domains of development. And from a neuroscience perspective, we know the brain is most sensitive to learning emotional control in the first 3 years of life.

This session focuses on the ways in which emotions develop and occur in the brain. Discover how emotional development is learned through interaction and experience, and furthermore how this impacts a child's reactions and behaviour. Learn more techniques for supporting big emotions and challenging behaviours.

We will discuss techniques for promoting autonomy, empowerment and the effective management of emotions and behaviours. Resource kit and lunch included. See schedule for a break down of the day.

Engaging Curriculum Solutions



Flexible
Schedule

Part 1 (9am-10.30 am)

- Welcome
- Introduction
- Brain development and the science of emotion

Morning Tea 10.30-10.45

Part 2 (10.45 - 12.45pm)

- Emotional Development Theory
- What we know from children who have experienced trauma
- Promoting positive emotional development

Lunch 12.45pm-1.15pm

Part 3 (1.15pm - 3 pm)

- Promoting positive emotional development
- Promoting autonomy and empowerment

Inservice Information

Sometimes what you really want is to get the team together in their own environment. Inservice are fantastic for inspiring the team as whole, and making sure everyone is on the same page. They encourage teamwork, connection and of course, professional development of the entire service.

We offer a range of inservice subjects which can be organised for full day weekend sessions or evening 2-3hour sessions. We allow the opportunity for you to set specific goals and even provide your philosophy so we can cater the training to the individual needs of your service. Some of the inservice sessions we provide are listed below, but we also try to be as flexible as possible and thus are happy to create training packs to suit your needs. For more information see the services tab on our website or for inservice enquiries contact us on:

director@engagingcurriculumnsolutions.com.au

- I'm an educator hear me roar - team building and empowerment session
- Transitions through life and learning
- Music and Movement in Early Childhood
- Risky Play in Early Childhood
- Literacy, Drama and Story Telling
- Embedding a Culture of Quality Improvement
- Reflective Practice in Early Childhood
- Trauma Informed Education
- Theory in Early Childhood
- All topics listed throughout this calendar and more.....

Calendar Events Booking Information

All of our full day calendar events are catered and include a take home resource pack to assist you on your future journey with the relevant subjects. Tickets can be booked by selecting the relevant event under the 'Events' tab of our website:

www.engagingcurriculumolutions.com.au

We accept PayPal payments. And remember - you don't have to have a PayPal account to use this option. Simply select 'Pay With Card' at the PayPal checkout and proceed with your credit card!

Alternatively you can email your ticket preferences (including attendee names and dietary requirements) to:

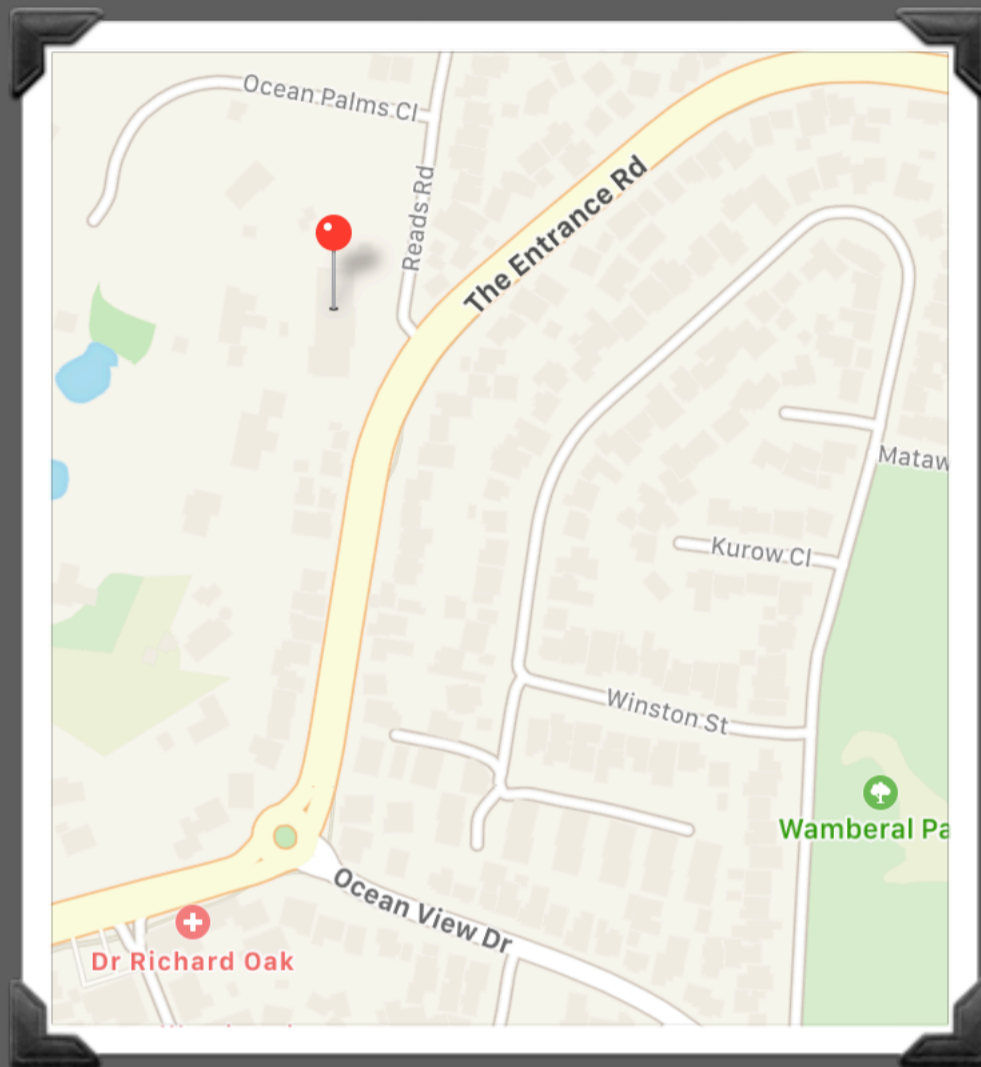
director@engagingcurriculumolutions.com.au

And we will invoice you for your tickets with direct debit payment options.

Your tickets will be issued via email, once payment is received.

While you're there, why not check out our shop with helpful EYLF resources!

Venue Information



Alkira ELC

1 Reads Rd.

Wamberal, NSW, 2060

Call (02) 4384 9000

Our thanks to the beautiful Alkira Early Learning Centre for hosting our events for over 6 years now. The use of your wonderful training space is very much appreciated!